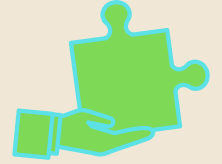


CAFES CONNECTION NEWSLETTER

MARCH 2025



COORDINATED ACCESS FOR EMPOWERING SUCCESS

BSCC Prop 47 Cohort III

https://www.bscc.ca.gov/s_bsccprop47/

CAFES Cohort III Partners

Santa Cruz County Probation

Janus of Santa Cruz

Goodwill Central Coast

Conflict Resolution Center

Santa Cruz County Office of the Public Defender

Santa Cruz Superior Court

Santa Cruz District Attorney's Office

Neighborhood Justice Program

Applied Survey Research

Contents

Goodwill Central Coast

GOODWILL CENTRAL COAST

Goodwill Central Coast is pleased to introduce Cassandra Nieves as the new CAFES Court Liaison. In this role, Cassandra builds upon her experience as a Reentry Court Case Manager, further strengthening collaboration between Probation, the courts, and court participants. She works onsite at the courthouse and Probation Service Centers in both North and South County, conducting CAFES eligibility screenings, substance use disorder assessments, program orientations, case management, and connecting participants with critical community services. She also attends court hearings, provides updates on participant progress, and informs court partners about available CAFES resources.

Since stepping into this position, Cassandra has gained a deeper understanding of the criminal justice system and the services available for both providers and clients. She values the opportunity to support individuals in dire need of assistance, many of whom struggle to access essential resources due to systemic barriers. Through this role, she has learned about programs she was previously unaware of and now recognizes the significant impact CAFES has in bridging these gaps. Many of the participants she encounters lack stable housing or legal support, leaving them discouraged and vulnerable. Being bilingual has also been invaluable, as it enables her to assist Spanish-speaking clients who often feel more comfortable communicating in their native language.

Cassandra expresses deep gratitude for the collaboration among the Collaborative Courts case managers, the Janus Connector Team, and Goodwill, whose teamwork makes daily challenges more manageable. She acknowledges the collective effort in ensuring participants receive the support they need and is continually inspired by the gratitude clients express when they are given a chance to move in the right direction. Looking ahead, she is excited to continue working with the team and expanding the impact of CAFES to better serve the community.

-Claudia Cortes
Goodwill Program Director