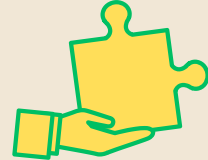


CAFES CONNECTION NEWSLETTER

APRIL 2025



COORDINATED ACCESS FOR EMPOWERING SUCCESS

BSCC Prop 47 Cohort III

https://www.bscc.ca.gov/s_bsccprop47/

CAFES Cohort III Partners

Santa Cruz County Probation

Janus of Santa Cruz

Goodwill Central Coast

Conflict Resolution Center

Santa Cruz County Office of the Public Defender

Santa Cruz Superior Court

Santa Cruz District Attorney's Office

Neighborhood Justice Program

Applied Survey Research

Contents

Spotlight on Carmen Hernandez

Spotlight on Janus Case Manager Carmen Hernandez

I would like to spotlight Carmen Hernandez for her exemplary work as a Peer Support Specialist at Janus of Santa Cruz, specifically within the CAFES (Coordinated Access for Empowering Success) program. Carmen's contributions have been invaluable to our mission of serving individuals who are justice-involved, experience substance abuse disorders, struggle with mental health issues, and or are facing housing instability.

Since joining the team, Carmen has demonstrated an unwavering commitment to supporting our underserved population. Her determination to help individuals connect with essential resources is remarkable. Carmen's empathetic approach and nonjudgmental attitude create a welcoming environment for those we serve. She consistently provides warmth, acceptance, and compassion, which are crucial assets for the works our team does and skills that come natural to her. These skills prove to promote positive outcomes for individuals navigating challenges in their lives.

Carmen's dedication to her work and her clients has not gone unnoticed. Her knowledge, selflessness, and sacrifices for her community led to her recognition by our leadership, resulting in a well-deserved promotion to Case Manager at the beginning of this year. This advancement reflects her outstanding performance and the respect she has earned from both her peers and superiors.

I have had the privilege to supervise Carmen and witness her profound growth, not only in her professional capabilities but also in her personal recovery journey. Her passion for supporting individuals who face overwhelming struggles has given her a strong sense of purpose and direction. Carmen exemplifies the change and dedication required to make a significant impact on our community.

Sincerely,
Nicholas Bobeda
Janus of Santa Cruz
CAFES Connector Team Supervisor