

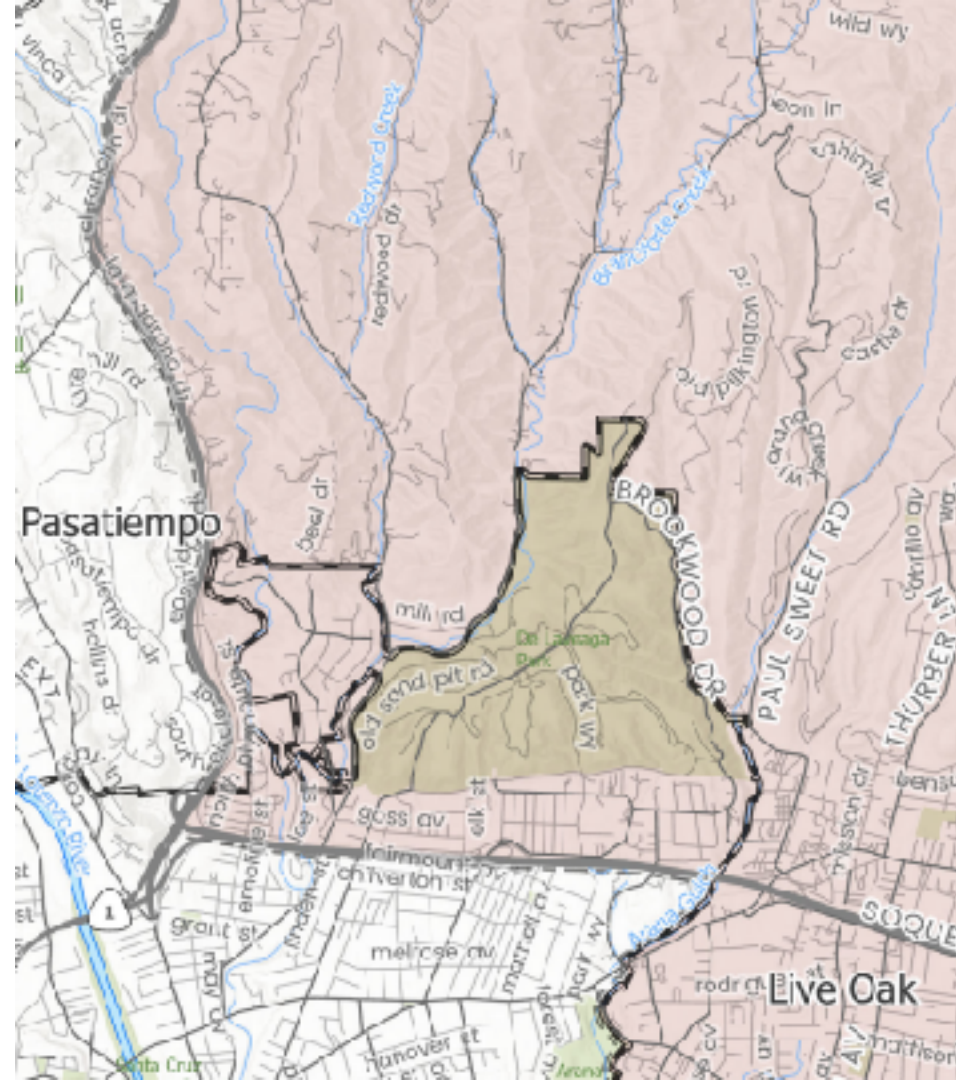
# DeLaveaga Town Hall

March 9th, 2023



# Agenda

1. March Storm Information
2. Improving Emergency Communications
3. FEMA/SBA, Disaster Recovery Centers
4. Expediting Permits for Comcast
5. Clearing Branches
6. Cleaning Encampments Near Waterways
7. Mental Health Policies and Programs
8. DeLaveaga to Downtown Bike Boulevard
9. Q&A



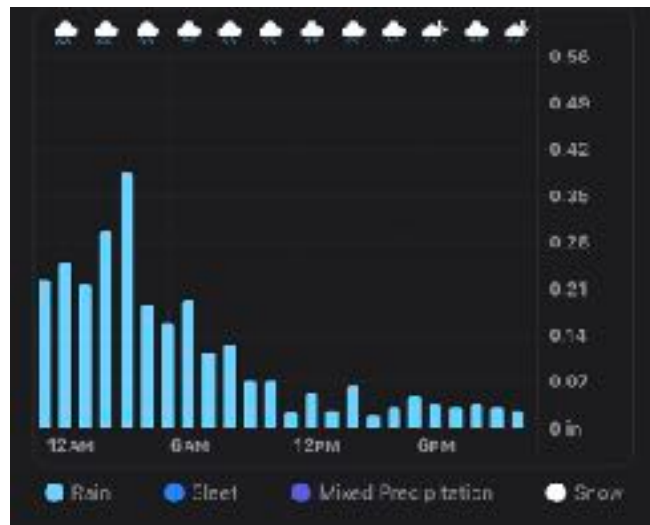
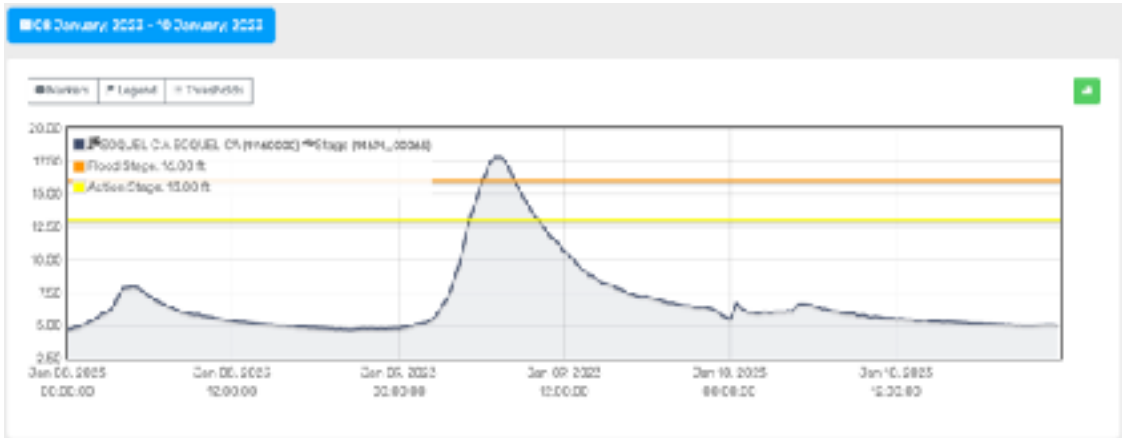
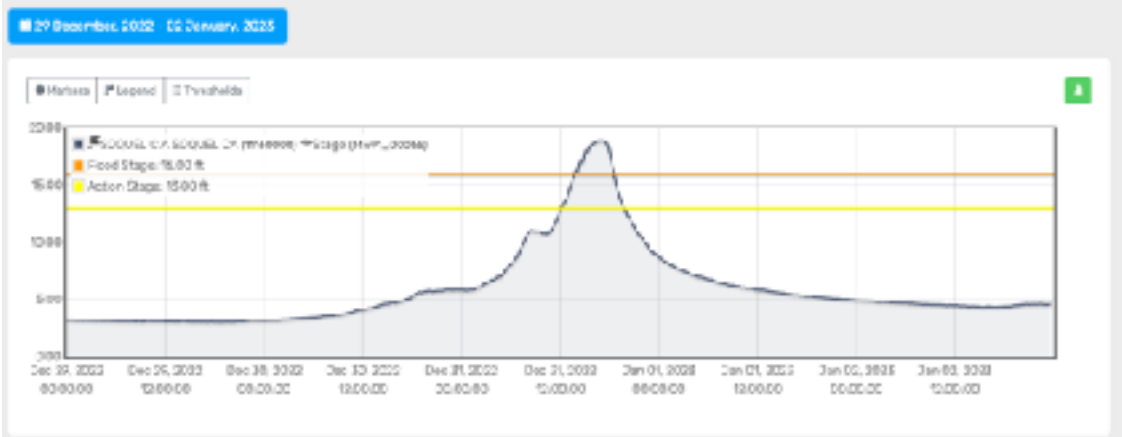
# March Storm Information

- County Emergency Operations Center is activated to Level 1 to help address impacts, staffed overnight.
- If you flooded in January, be prepared to flood again. Local streams and rivers are likely to rise rapidly and lead to flooding in low-lying neighborhoods in Felton, Soquel, Aptos and Watsonville.
- <https://www.co.santa-cruz.ca.us/OR3/MarchStormInformation.aspx>





# Stream Gauges - Soquel Creek



# Sandbag Locations

NORTH COUNTY	MID & SOUTH COUNTY
<b>CALFIRE Big Creek Station</b> 240 Swanton Road, Dawnport (831) 426-1864 > Sand and Bags	<b>Branchforte Fire</b> 2711 Branchforte Drive, Santa Cruz (831) 423-9856 > Sand and Bags
<b>Boulder Creek Golf Course</b> Intersection of East Hilton Drive and Hwy 236 (831) 338-7222 > Sand and Bags	<b>Central Fire</b> 930 17th Avenue, Santa Cruz (831) 316-3549 > Sand and Bags
<b>Redwood Elementary School</b> 16500 Hwy 9 / Upper parking lot (831) 338-7222 > Sand and Bags	<b>Soquel Village- County Parking Lot</b> 2650 Deussenbiss Avenue, Soquel (831) 477-3999 > Sand and Bags
<b>CALFIRE Fall Creek Station</b> 7272 Empire Grade, Santa Cruz (831) 426-3131 > Sand and Bags	<b>Public Works Yard</b> 199 Grimmer Road, Watsonville (831) 477-3399 > Sand and Bags
<b>Felton Fire</b> 131 Kirby Street (831) 335-4422 > Sand and Bags	<b>CALFIRE Corralites Station 120 Eureka Canyon Road</b> (831) 724-2446 > Sand and Bags
<b>Valley Churches United/Ben Lomond Fire 8400 Highway 9</b> (831) 336-6256 > Sand and Bags	<b>CALFIRE Burrell Station</b> 26050 Highland Way, Los Gatos (408) (831) 353-1022 > Sand and Bags
<b>Zayante Fire</b> 7700 E. Zayante Road, Felton (831) 335-5100 > Sand and Bags	<b>Pajaro Valley Fire</b> 562 Casserly Road, Watsonville (831) 722-8188 > Sand and Bags
<b>Scotts Valley Fire</b> 7 Erba Lane (831) 438-0211 > Sand and Bags	<b>Santa Cruz County Fairgrounds</b> 2601 East Lake Avenue, Watsonville (831) 477-8999 > Sand and Bags



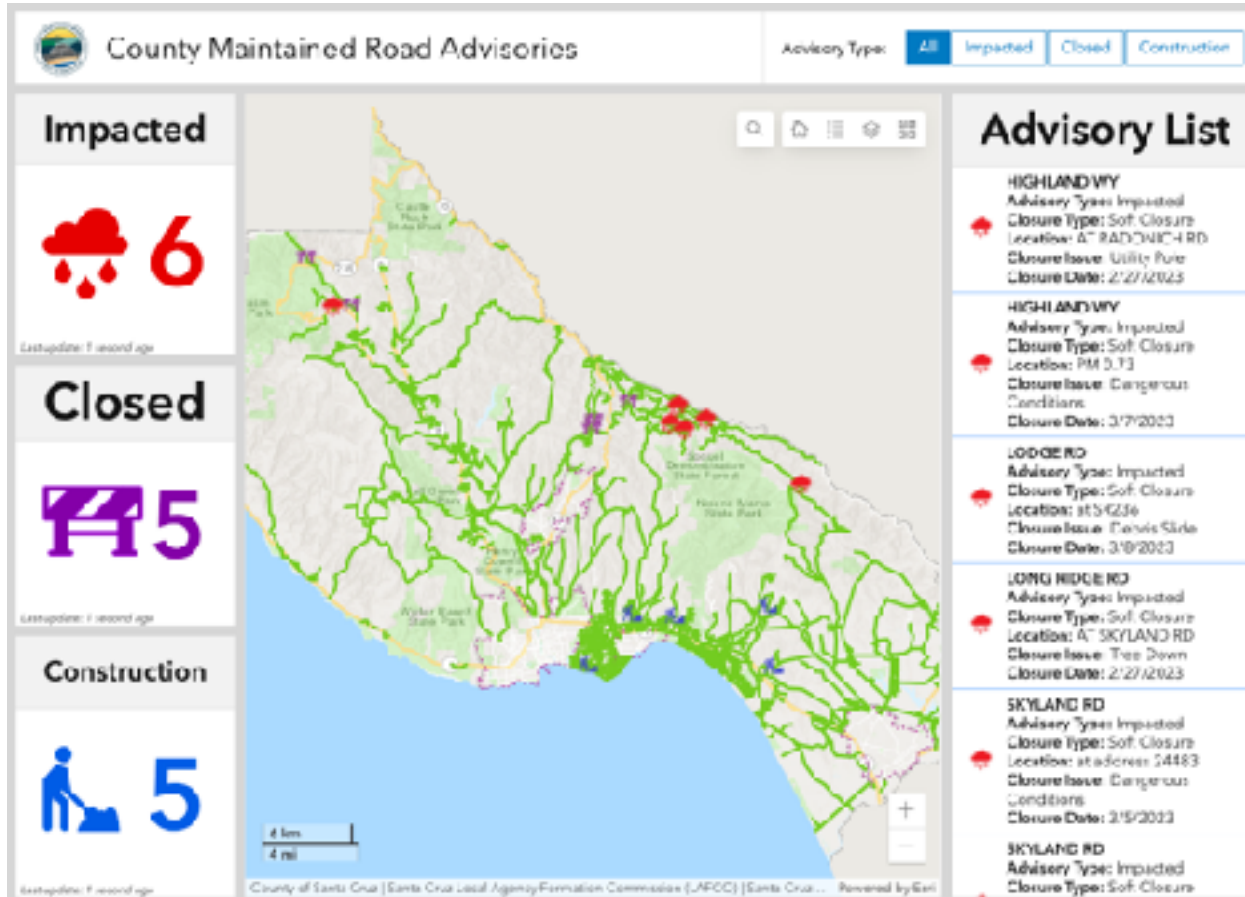
Please call the location you wish to get sand and sandbags from first to confirm they are stocked.

***Sandbag tip:*** Only fill bags halfway, they work much better at keeping the water out when stacked than bags that are filled to the top.

# Shelter Sites

LOCATION	OPEN STATUS	MAP LINK & ADDRESS	CAPACITY	ADA COMPLIANT	PET FRIENDLY	RV PARKING
<b>Watsonville Vets Hall</b>	Open 3/9, @ 4PM	<a href="#">15 E Beach St, Watsonville, CA 95078</a>	35/35	YES	Pets in carriers only	NO
<b>Cabrillo College Gym</b>	Open 3/9, @7PM	<a href="#">8500 Sequel Dr, Aptos, CA 95003</a>	100/100	YES	Pets in carriers only	Yes, no hookups
<b>Ramsay Park (TEP)</b>	Open 3/10, 8AM-8PM	<a href="#">1301 Main St, Watsonville, CA 95078</a>	TBD	YES	NO	NO
<b>Crosetti Hall Santa Cruz County Fairgrounds</b>	TBD	<a href="#">2801 E Lake Ave, Watsonville, CA 95078</a>	120/120	YES	Pets in carriers only, large animal evac.	Yes, no hookups
<b>Depot Park (Overnight warming center only)</b>	Open 3/9, 8AM-8PM	<a href="#">119 Center St, Santa Cruz, CA 95060</a>	27/27	YES	NO	NO
<b>Scotts Valley Community Center (TEP)</b>	Open 3/10, 8AM-8PM	<a href="#">380 Kings Village Rd, Scotts Valley, CA 95066</a>	TBD	YES	NO	NO

# Roads



## Road Operations

24 Hour Dispatch

(831) 477-3999



# Back Up Power for Communications Infrastructure

- Contacted Comcast, Verizon, AT&T and Frontier regarding backup power options.
- Comcast has 15 pending permits for back up batteries, with 7 listed as a priority.
- 5-10 business day processing for battery projects and 10 day processing for battery+retaining wall projects.



# Rebuilding - FEMA, SBA

- Application deadline is **March 16th, 2023** for storm-related damages
- FEMA cannot duplicate insurance benefits. Begin by filing a claim with insurance.
- Disaster Recovery Centers are located in **Santa Cruz at the County Governmental Building, 701 Ocean St.**, and in Watsonville at the City Government Center, 250 Main St., Watsonville. The Santa Cruz DRC is open from **9 a.m.-5 p.m., Monday through Friday**. The Watsonville DRC will be open 8:30 a.m.-4:30 p.m., Monday through Saturday.



# Clearing Branches

- Public Works regular vegetation clearing program runs May–Oct
- Debris clearing is ongoing, for areas impacted by the Winter storms.
- **Road Operations**, 24 Hour Dispatch: (831) 477-3999
- Send [first.district@santacruzcounty.us](mailto:first.district@santacruzcounty.us) details, including *specific locations, along County Maintained Roads* in need of service. Privately maintained roads aren't eligible for this type of servicing.
- Resource Conservation District spring no-cost chipping program, registration opens April 1st: [www.rcdsantacruz.org/chipping-programs](http://www.rcdsantacruz.org/chipping-programs)



# Cleaning Encampments Near Waterways



*San Lorenzo River Benchlands*

# Cleaning Encampments Near Waterways



*Carbonera Creek*

*Clean Photo Coming Soon*

# Cleaning Encampments Near Waterways



*Branciforte Dr*

## Next Steps:

- Continue enforcement
- Identify funding for K-rail or split rail fence
- Identify funding for expanded shelter and safe parking spaces
- Clear encampment from DeLaveaga Park
- Install fence

# New Behavioral Health Resources

- 5300 Soquel Ave acquired for Children's Crisis Stabilization Unit.
- 8 bed crisis stabilization unit, 16 bed residential program.
- Exploring options for interim service location.
- CARE Court program is scheduled to begin Dec. 2024. County meeting quarterly to review learnings from pilot regions.



# HWY 1 Groundbreaking

- Phase 1 – Summer groundbreaking for auxiliary lane/ bus on shoulder project from Soquel Dr to 41st Ave
- Phase 2 – Summer groundbreaking
- Phase 3 – \$30 million “mega grant” allocated from the Federal Infrastructure and Jobs Act



*Figure 1 - Phase 1 Project includes auxiliary lanes and a bus on shoulder facility in both directions of Highway 1 (41st Avenue to Soquel Drive), retaining walls, soundwalks, and a new bicycle/pedestrian overcrossing at Chanticleer Avenue*





## Questions?



First.District@SantaCruzCounty.us



@1stSuperSCC

***Thank You!***